

Initial setup

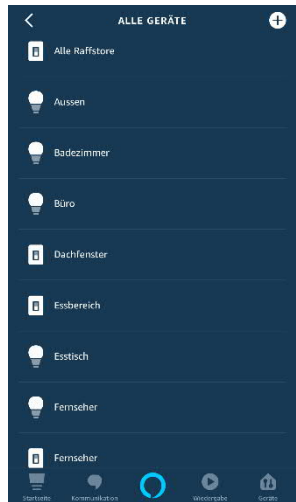
1. Connect piCino to power and ethernet
Min. 5V / 2A
2. Add new project
And enter piCino-Serial
3. Edit Bticino-Server
Set IP-address of Bticino-Gateway
Supported Servers: F453, F454, F455, MH200, MH202
4. Add items
 - Select lighting, dimmer, automation and scenes
 - Set voice-command
 - Set Bticino-address
5. Send configuration
Set piCino-IP-address (or „Search“ for it)
and send config



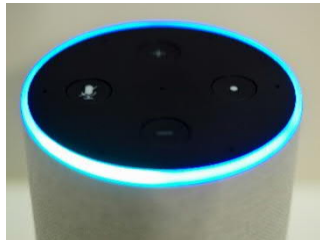
Naming	Address	Voi...	Room/Group	Key
Lighting/Switch <input type="checkbox"/> Tisch	1.5	Yes	EG, Lichter	
Dimmer <input type="checkbox"/> Sofa	3.0	Yes	EG, Lichter	
Shutter <input type="checkbox"/> Jalousie	4.0	Alexa	EG, Raffstore	
Individual scene <input type="checkbox"/> Jalousien		Yes	_STOP_	

Control possibilities

One device – many control possibilities for your Bticino-system!
Whether at home or from afar



Alexa App
App, voice and remote control
(even without Amazon Echo)



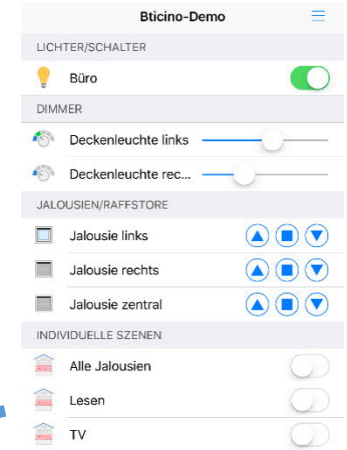
Amazon Echo (Alexa)
voice control



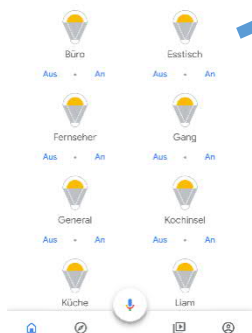
Amazon Fire-TV
voice control



Webbrowser
all browsers/operating systems (only within LAN)



openHAB App
App and remote control



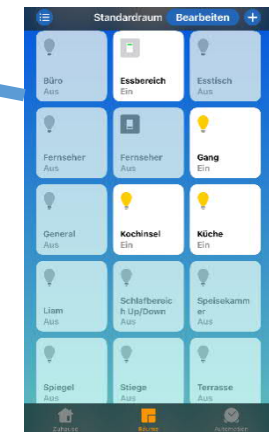
Google Home App
App, voice and remote control
(even without Google Assistant)



Google Home Assistant
voice control



Apple Siri
voice control



Apple Home App
App-, voice and remote(*) control
(*) iPad/AppleTV as central required